



**Building Connections: How the Denali Commission  
Supports Rural Alaska Transportation**  
Mid-Session Transportation Symposium  
February 11, 2026

# Denali Commission

## Alaska's Independent Federal Regional Commission

Mission: Promote economic development with a focus on critical infrastructure and workforce training for **rural communities** in Alaska.

### Transfer and Gift Authority

- Authority to accept funds from both non-federal and federal sources
- ←
- Registers funds as expended, eliminating risk of “sweep-back”
- 
- Becomes Commission funds with statutory flexibility

### Non-Federal Cost Share Match

- Ability to match funds with other federal agencies
- Acts like private or state funds

### No-Year Funds

- Does not expire at end of fiscal year
- Allows for long-term capital “banking”



# Recent Milestones

- Base FY26 \$18M Appropriations Approved (Public Law No: 119-74)
- Transportation \$20M Appropriations Approved (Public Law No: 119-75)
  - \$15 M Surface
  - \$5 M Waterfront
- Commission's 2026 Workplan approved and available for comment on the [Federal Register](#).
  - Roads, Boardwalks, Ports, Waterway Facilities, and Intermodal Connections
- 5 Additional Staff Hiring Approved by OPM



# Highlights & Approach

333 projects  
since 2006

196 communities  
served  
2006 – 2025

\$193 Million  
Commission  
Funding

\$735 Million  
Matching or  
Leveraged  
Funding

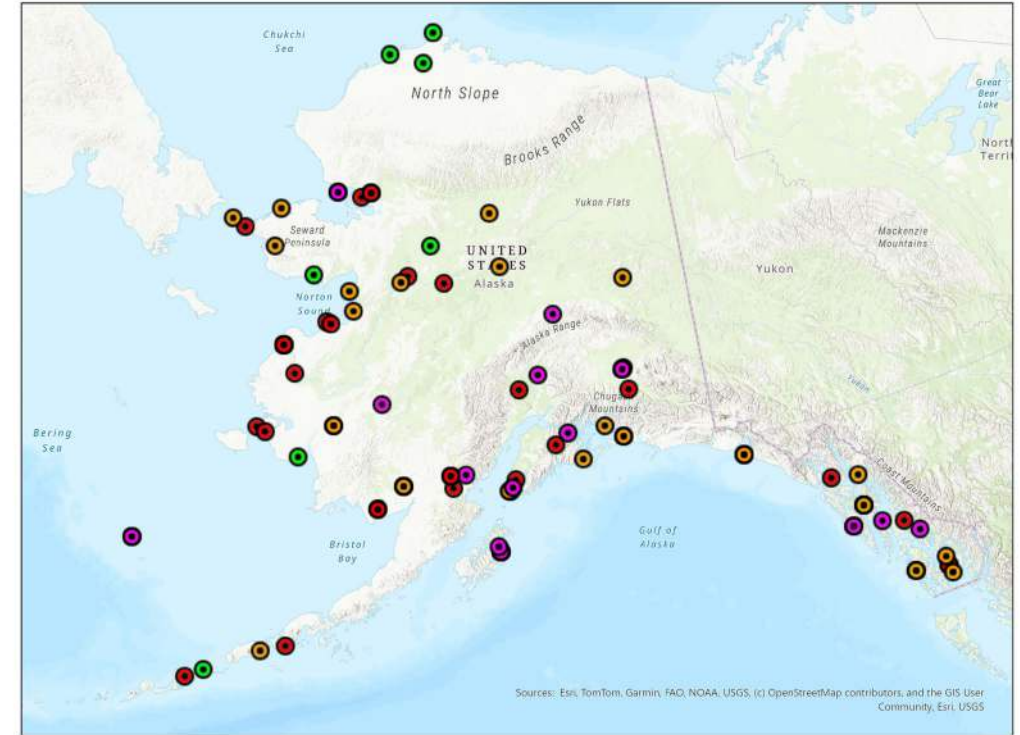
\$80.6 Million  
Funds  
Programmed  
2020 – 2025

95 projects  
funded  
2020 - 2025



# Highlights & Approach

- Funds awarded through competitive funding opportunities
- Projects evaluated by Transportation Advisory Committee – Appointed by Governor’s Office Boards and Commission
- Projects approved by Federal Co-Chair
- Projects located in communities identified in 2024 DOL&WD Distressed Communities Report and 2019 Statewide Threat Assessment are prioritized in project review
- Projects that repair and maintain transportation infrastructure, community health and safety,



## Waterfront Program

Improvements to small dock facilities, small harbor replacements and upland facilities, barge landings, and mooring points.



## Surface Transportation

Local roads and drainage improvements, board roads & boardwalks, trail markers, bridges, rural transit & pedestrian facilities, bridges, etc.



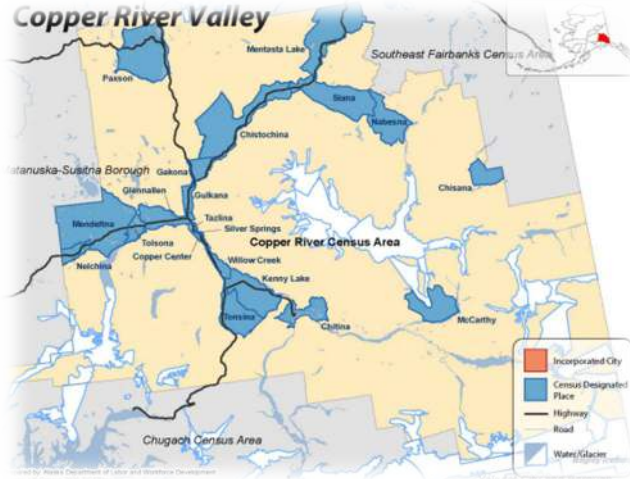


## Recent Partnerships and Initiatives

- Tribal Travel Support with Alaska Tribal Administrators Association and Alaska Tribal Transportation Working Group for 2026 Alaska Tribal Transportation Symposium
- National Guard Innovative Readiness Training Program Collaboration on Projects – NVE and SIDCO AS
- TCC Partnership project on Dust Control Training & Demonstration
- Collaboration with DOT and AML Partnership Projects
  - Statewide Boardroads Guide
  - Alaska Community Connectivity Action Plan



# Regional and State Partnerships



Copper Valley Development Association (CVDA)'s Rural Planning Organization Pilot Program with DOT&PF – Developing Long Range Plan

- Foster coordination of local planning, land use, economic development, regional and local coordination



Regional Projects with Kawerak

- Winter Trail Marking project along Nome-Teller Highway, Wales to Brevig Mission
- Golovin Subdivision Relocation Design Study
- Wales to Tin City Road
- White Mountain Community Streets



**Shishmaref Sanitation Road Erosion Control**  
Native Village of Shishmaref



**Ruby Slough Road**  
Native Village of Ruby

# Active Transportation projects in Southeast Alaska

**YAKUTAT**  
**Project #1729**  
Ridge Road and Denali Road Extension upgrades.  
**Project #1820**  
Design and permitting for Yakutat boat harbor reconstruction project.

**GUSTAVUS**  
**Project #1943**  
Good River Bridge repair and stabilization.

**JUNEAU**  
**Project #1796**  
Kowee Creek affordable housing subdivision road construction.

**PETERSBURG**  
**Project #1900**  
Safety and protection replacement to Banana Point breakwater system.

**Project #1954**  
Scow Bay small vessel haul out and work yard construction.

**WRANGELL**  
**Project #1993**  
Construction of new subdivision road and utilities for Alder Top Village.

**ANGOON**  
**Project #1747**  
Small harbor reconstruction improvements.  
**Project #1749**  
Barge landing construction for Thayer Creek hydro.  
**Project #1921**  
Street repairs and resurfacing with water/sewer replacements.

**SITKA**  
**Project #1979**  
Purchase and delivery of two ADA accessible vehicles.

**KETCHIKAN**  
**Project #1854**  
Development of Trails Master Plan.

**Project #1822**  
Construction of bridge across Beaver Falls Creek.

**Project #1856**  
Loring Dock stabilization improvements.

**Project #1927**  
Affordable housing subdivision road design and construction.

**CRAIG**  
**Project #1863**  
Shaan-Seet dock replacement.

**24% of active transportation projects are in Southeast.**



More details on Denali Commission projects can be found at <https://cf.denali.gov>

# 2026 Statement of Interest –Rural Match/Gap Transportation Program



- **\$5 Million Available**
- Match and gap funding assistance (up to 30% or \$1 Million max) for rural transportation projects
- Must be construction ready - transportation improvement projects (ie. NEPA and bid-ready documents near completion, partially funded)
- Have demonstrated need for gap funding for an existing project that has other committed program funds
- Have applied or received other funding which requires a local match

## Eligible Entities

- Municipal, borough, and tribal governments
- Indian Tribes as defined by Title 25 US Code § 5304 and regional tribal non-profit organizations
- Non-profit organizations



**February 13**  
Statements of  
Interests Closed



# 2026 Statement of Interest –Rural Match/Gap Transportation Program



## Surface Transportation

- Road safety improvements including resurfacing, dust control, and drainage improvements.
- “Board” roads and All-Terrain Vehicle trails, seasonal roads and signage enhancements, multi-use trails and walkway for bicycles and pedestrians.
- Rural transit activities including facility improvements and limited duration operation/maintenance of transit service and vehicles,

## Waterfront Transportation

- Improvements to rural port and harbor facilities including floating dock and moorage systems.
- Boat launch ramps, barge landings, storage and laydown areas, and other adjacent support facilities.



**February 13**  
Statements of  
Interests Closed



# Invited to Apply

Evaluation Criterion	Maximum Score (points)
Distressed Communities and/or Disadvantaged Communities Proposed projects benefiting distressed communities and/or disadvantaged communities	10
Statewide Threat Assessment Grouping Proposed projects benefiting environmentally threatened communities will receive up to 10 preference points. For projects that benefit more than one rural community, preference points will be averaged by community designation	10
Community Background	5
Project purpose, need, and impact	20
Scope of work and schedule	20
Organization, capacity, and delivery method	10
Partnerships	15
Budget/resources	10
<b>Total</b>	<b>100</b>



**End of February**  
Notification for Letters Sent out

**Late March/Early April**  
Deadline for Invited Applications

# 2026 Statement of Interest – FY26 Rural Match/Gap Transportation Program

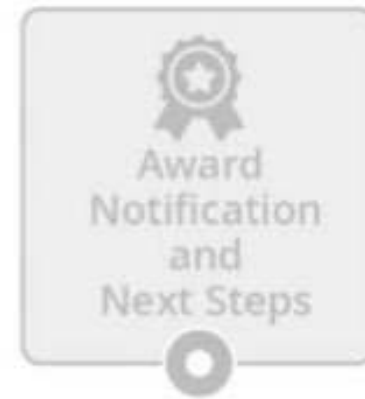


**February 13**  
Statements of  
Interests Closed



**End of February**  
Notification for Letters  
Sent out

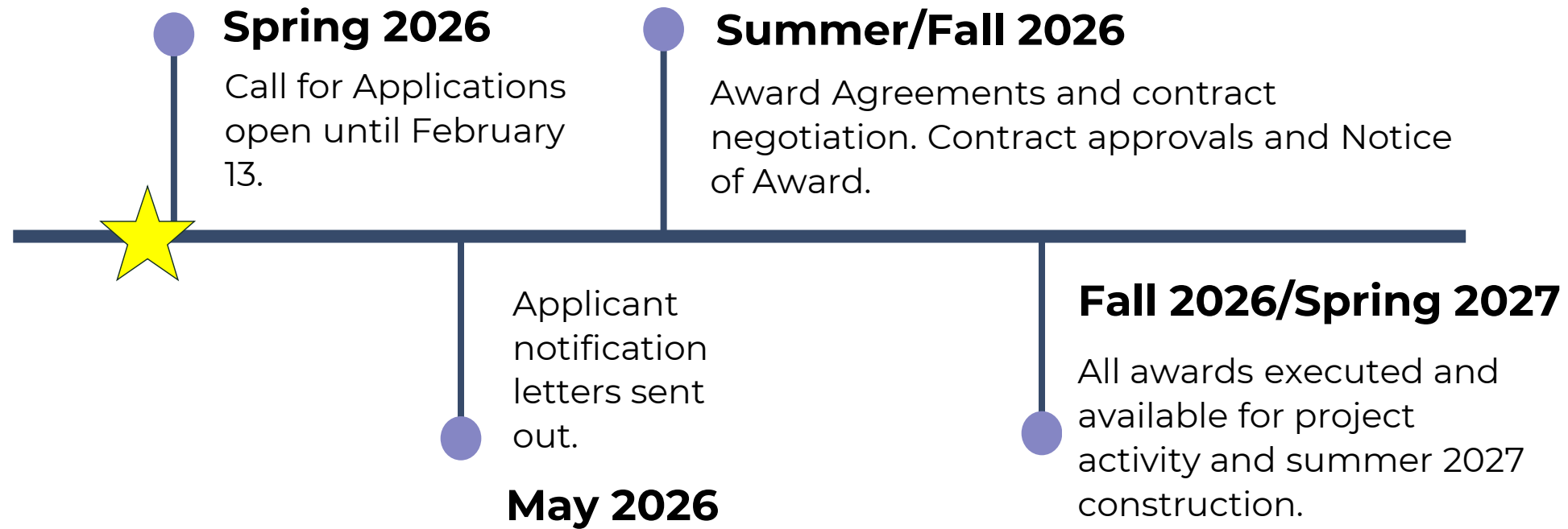
**Late March/Early  
April**  
Deadline for Invited  
Applications



**Early May**  
Notification Letters Sent  
out  
Award Agreements to  
be drafted



# 2026 Statement of Interest – Rural Match/Gap Transportation Program





## Building Connections: How the Denali Commission Supports Rural Alaska Transportation

February 11, 2026

Nikki Navio  
Transportation Program  
907-271-1413  
[nnavio@denali.gov](mailto:nnavio@denali.gov)